

4G/3G/2G

Premium GPS Tracker U1 Lite+ LTE

- ✓ Support LTE Cat.1/LTE Cat.4
- ✓ Cables are compatible with U1 Lite+2G & 3G for customer cost savings
- ✓ IO support up to 10 Digital Input & 4 Digital Outputs for expanding device functionality
- ✓ Support WiFi Hotspot (Cat.4) to offer drivers & peripheral devices internet access
- ✓ Support OBD Interpreter for ECU Data Collection

4G (Cat.1 / Cat.4)



Advantages

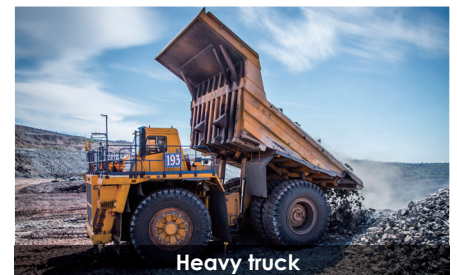
- > 2G or 3G or 4G (Cat.1/Cat.4) Network
- > 1-Wire® Interface
- > Bluetooth Interface for Wireless Configuration *
- > 1 to 3 RS232 Extension Cable *
- > IO Expender Cable *
- > RS-485 Interface Cable *
- > WiFi Communication (Internal Hotspot module / 4G Cat.4) *
- > AES-256 Data Encryption *
- > Built-in OBD Interpreter *
- (*) Optional



Features

- > Cost effective and easy installation
 - > Two-ways voice communication*
 - > Data communications by LTE / UMTS / HSPA / GPRS / EDGE, SMS, FTP
 - > Support GPS / Glonass Satellite System
 - > Built-in 3-axis or 6-axis* accelerometer
 - > Support harsh acceleration / harsh braking / Impact detection/ Flip over detection / harsh cornering*
 - > Support 1-Wire® interface temperature function and i-Button driver ID
 - > RS232 interface for rich accessories supporting, Fuel level sensor, RFID reader, Barcode, and so on.
 - > 2G / 3G / 4G jamming detection
 - > Geofence report in circular and polygonal types
 - > Support 1-Wire® interface temperature function and i-Button driver ID
 - > Remote configuration
 - > Configurable real-time tracking
 - > Intelligent power management
 - > GPS Odometer data reading and rich user-defined reports
 - > FOTA firmware via FTP
 - > Power low / lost alarm
 - > GPS antenna tamper detect alarm
 - > Maximum 200,000 data logs
- (*Optional)

Industry



Specifications

Communication Specification

- Frequency**
- LTE-FDD: B1 / B2 / B3 / B4 / B5 / B7 / B8 / B12 / B13 / B18 / B19 / B20 / B25 / B26 / B28
 - LTE-TDD: B38 / B39 / B40 / B41
 - WCDMA: B1 / B2 / B4 / B5 / B6 / B8 / B19
 - GSM: B2 / B3 / B5 / B8

Data protocol TCP, UDP, SMS, Voice

General Specification

Dimensions (L x W x H) 72mm x 105.5mm x 28.5mm

Weight 120g

Power Source 6-36V DC

Operating Temperature -20°C~+70°C(-4°F~158°F)

Power Consumption

Operating Mode 80mA@12V DC

Standby Mode 20mA@12V DC

Sleep Mode 5mA@12V DC

Interface

Serial Ports 1 x RS-232 Port(Configurable baud rate)

- Input Ports**
- 1 x ACC/Ignition Input
 - 3 x Digital Inputs
(1 x Positive triggers & 2 x Negative triggers)
 - 2 x Analog Inputs (12-bit resolution)
 - 1 x 1-Wire® Input

Output Ports 2 x Digital Outputs (Max. sink current 300mA)

Two-way voice port (Optional)

The specification may be subjected to change without prior notice.

Accessories

Standard

- Power cable
- I/O cable
- Antenna GPS
- Audio Cable
- Antenna GSM / LTE

Option

- Personal ID Identification Kit
- USB cable
- Audio kit(Speaker & Microphone)
- i-button
- Temperature sensor
- TPMS solution
- 1 to 3 RS232 Extension Cable
- IO Extension Cable
- RS-485 Interface Cable

